

# Keys to Agronomy

JUNE '24

In this issue: ● Planting & Harvest ● Timing of Irrigation ● Cover Crop Economics  
● Rainwater Harvesting ● Ag Masterminds ● Other Happenings ● Save the Date

## TRIALS 2024

## Planting & Harvest

May/June has been a busy month...or two! Much of the month consisted of harvesting wheat variety trials or planting (and replanting) replicated agronomic cotton evaluation trials (RACE). Add some data digging on the recent winter pea crop and the month has flown by!

### Wheat

Data from the wheat trials is being dug through and write-ups are in the process. Soon, a report will be available on the [varietytesting.tamu.edu/smallgrains](http://varietytesting.tamu.edu/smallgrains) website.



This is also where you can find the wheat pick's list for current and previous years as well as information on other grain trials throughout Texas.

### RACE

I don't know about you, but I love a good field trip! On my website [castro.agrilife.org/agronomy](http://castro.agrilife.org/agronomy) under the "current projects" menu, you will find all the plot maps for the RACE trials located in the Southern High Plains and Castro County. I encourage you to grab a plot map, cup of coffee, and possibly some breakfast and head out to see the closest trial. When you do, give me a call. I'd love to meet you out there!



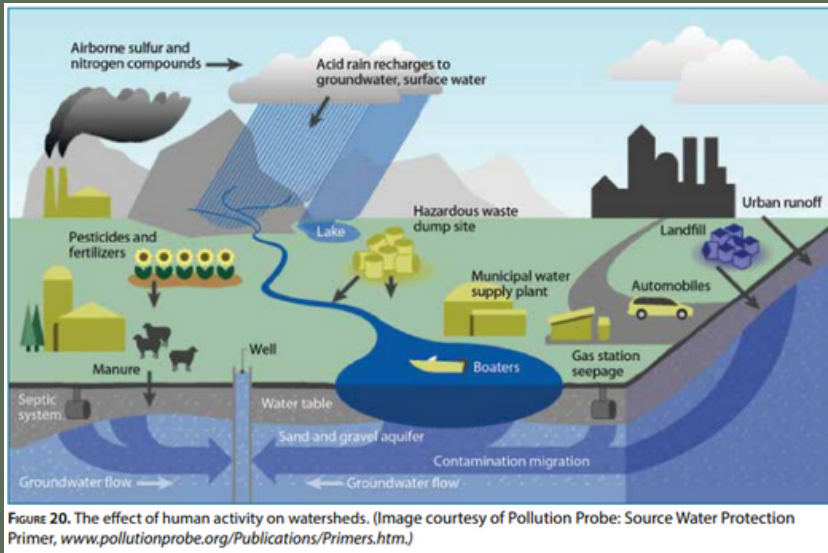
Contact Me!

Got an idea, question, or  
comment?

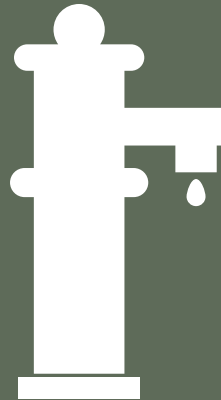
Kristie Keys  
[kristie.keys@ag.tamu.edu](mailto:kristie.keys@ag.tamu.edu)  
325-665-8790

TEXAS A&M  
AGRI LIFE  
EXTENSION

# WATER QUALITY & TESTING



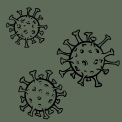
Do you depend on a private well for drinking water? Do you know if it's safe for you and your family? You can last a few weeks without food but only a few days without water. Knowing the quality of that water is important as domestic water well owners do not have monitoring requirements like there are for public water supply systems. Natural contaminants can be found in almost all groundwater even with no human activity or pollution. These contaminants are picked up by water moving through underground rocks



and the soils and naturally dissolving elements. The amount of the substances is what determines if the water poses a health risk. Groundwater contamination by human activities like improper use of fertilizers, manures, herbicides, and pesticides, poorly located or maintained septic systems, leaking or abandoned underground storage tanks, stormwater drain discharge, and chemical spills at industrial sites are just a few ways your private well may be at risk for contamination. Private well owners should have their well water tested and compare the results against the federal standards.



The Texas Well Owner Network and Texas A&M Agrilife Extension Service have partnered to assist Texas residents find out more information about their private wells and the quality of water supplying their homes as well as resources on septic system maintenance, well maintenance and construction, and water quality and treatment. This program screens for contaminants including total coliform bacteria, E. coli, nitrate-nitrogen, and salinity. What can these contaminants do to you as a human?



## E. coli

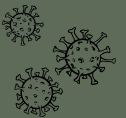
- potential gastro-intestinal symptoms include diarrhea, cramps, nausea, or others

## Nitrate-nitrogen

- disrupt the ability to carry oxygen throughout the body, "blue baby syndrome"

## Salinity

- salty taste
- may damage soil or plants



**COMING SOON**  
*Stay Tuned*

More information is coming on a program in Castro, Hale, and Lamb counties on how to get your domestic water well tested! As soon as all dates are set in stone I will share how to collect your samples and where to drop them off to be tested. A 1-hour and 4-hour program will also be offered to learn more about your wells and test results to keep your family safe.

Contact Me!

Got an idea, question, or comment?

Kristie Keys  
kristie.keys@ag.tamu.edu  
325-665-8790

TEXAS A&M  
AGRI LIFE  
EXTENSION

# COTTON INCORPORATED TOUR

Close to landing in Raleigh, NC

## Water... Trees... Cotton!!!

I've never been to North Carolina, I have lived in Southeast Texas for a few years in the Big Thicket National Preserve but trees in Raleigh, NC, the home of Cotton Incorporated, seemed different... bigger, growing closer perhaps. I was lucky enough to have a window seat on all parts of my flight there and back. This gave me a chance to reflect and think about the difference in agriculture between the two locations. Thanks to The Cotton Board and the Southern Plains Regional Communication Manager,

Close to landing in Lubbock, Tx

Shelley Heinrich, I was able to attend the Women in Ag Tour that allows cotton producers, gin workers, industry folks, Extension employees, and more to see how the assessment dollars are used inside Cotton Incorporated World Headquarters and Research Facility in Cary, North Carolina. This three-day tour is fast and furious and a lot of fun!! We heard from the sponsors of this trip, National Cotton Council, Cotton Incorporated & staff in each specialized area, visited the innovative laboratories inside the research facility, and toured Gildan, the local textile mill to see cotton being processed and manufactured into a commercial product. The highlight of the trip? I'm impressed by the amount of marketing done to educate the general public about the benefits of cotton, debunking old-school thoughts of heavy and non-breathable materials. Check your tags and support cotton, even if it's blended, that's better than nothing.

The marketing team spends countless hours staying at the forefront of fashion trends and provides the industry with a variety of cotton-rich products and fabrics that appeal to men's, women's, children's, and home markets. **Continued next page!**



Adding to my cotton corner on my desk

Contact Me!

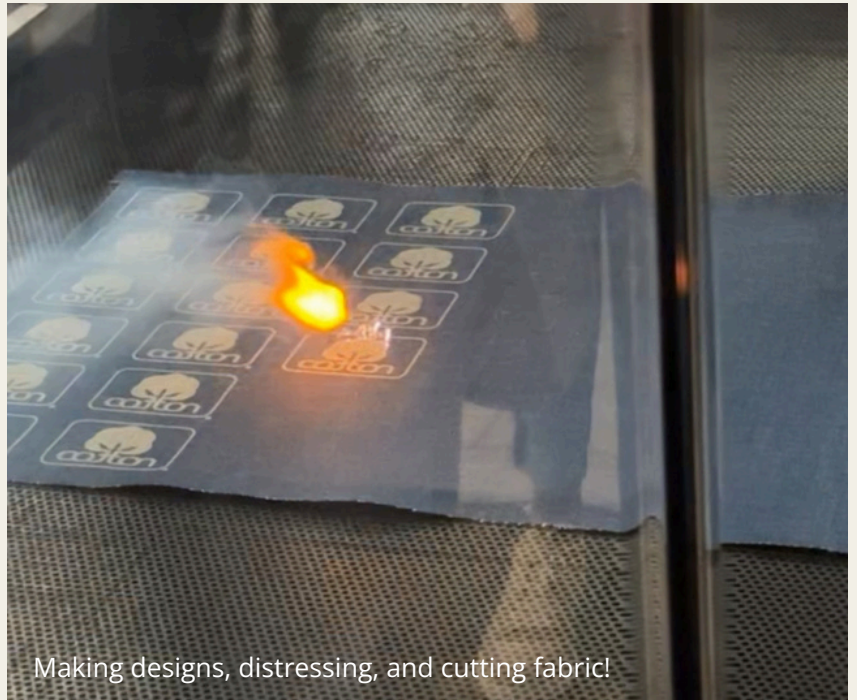
Got an idea, question, or comment?

Kristie Keys  
kristie.keys@ag.tamu.edu  
325-665-8790

TEXAS A&M  
AGRI LIFE  
EXTENSION

# COTTON INCORPORATED TOUR CONTINUED

Nerd alert.. I thought the laydown at the textile mill was AWESOME! I've heard about laydowns at textile mills but never been able to experience it, until now! The laydown is up to 90 bales of cotton of similar quality that's being mixed to make your fabric. The technology these days is amazing to make consistent fabric for clothing you love. Another fun fact is the distress in your jeans (the ones you **buy** distressed, not the ones you make on accident when completing farm chores) are now made using technology versus the fabric being put on a mannequin and hand-distressed! This is the picture below with the fire! Did you know you can support cotton producers by buying other products than just clothing? Have you heard of cotton seed oil? A naturally high smoke point makes cottonseed oil an ideal frying choice, according to [cottonseedoil.org](http://cottonseedoil.org). It also has great flavor stability and versatility. Visit the website to learn more. Other helpful websites to visit is [thefabricofourlives.com](http://thefabricofourlives.com) and [cottonworks.com](http://cottonworks.com) to learn more!



Making designs, distressing, and cutting fabric!



Laydown at Gildan Textile Mill



Contact Me!

Got an idea, question, or comment?

Kristie Keys  
[kristie.keys@ag.tamu.edu](mailto:kristie.keys@ag.tamu.edu)  
325-665-8790

TEXAS A&M  
AGRI LIFE  
EXTENSION

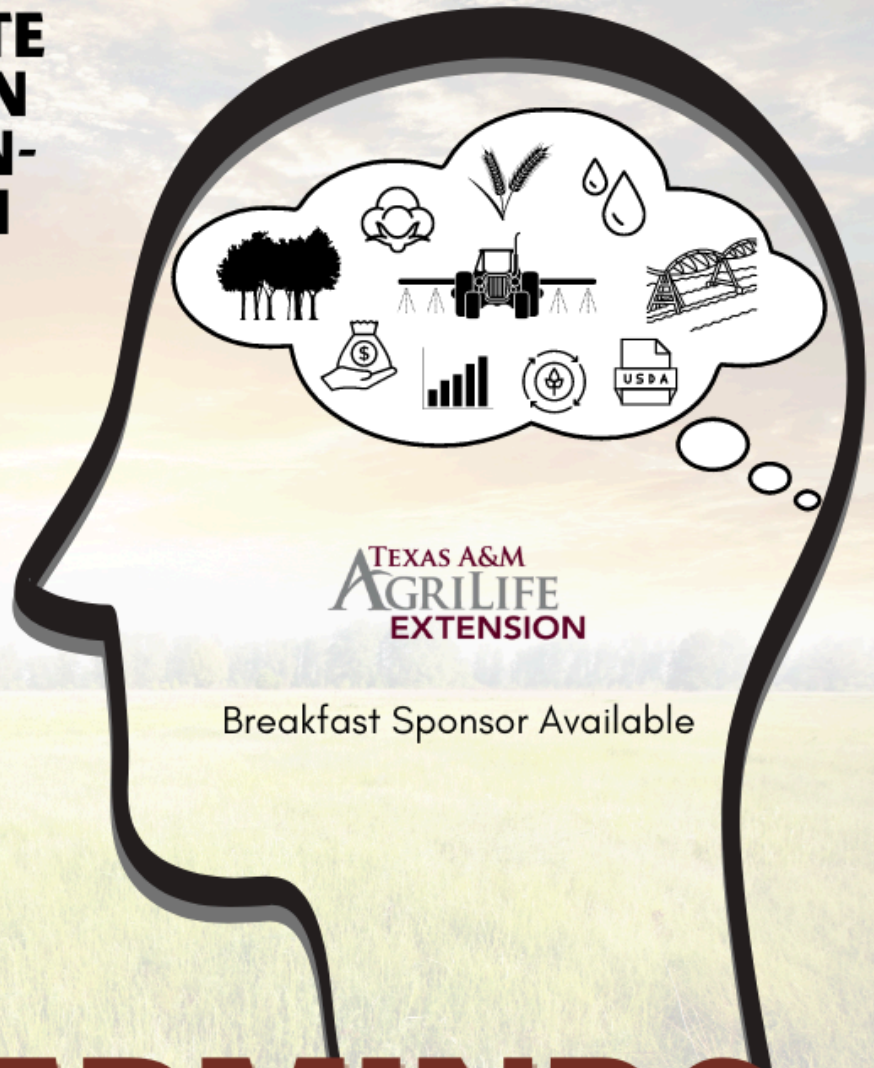
# UPCOMING PROGRAMS

## MANAGING MID-LATE SEASON INSECTS IN THRYVON AND NON-THRYVON COTTON

**PRESENTED BY:**  
**DR. SUHAS VYAVHARE**  
EXTENSION ENTOMOLOGIST

7.16.24  
8 am

Littlefield, Texas  
Location TBD



Breakfast Sponsor Available

# AG MASTERMINDS

RSVP not required but encouraged! Contact Kristie Keys at 325-665-8790.

## Breakfast Sponsorship Available



It's important that producers get the latest information on best management practices, this is the thought behind the Ag Mastermind Series. It's proven that eating a good breakfast increases energy levels and alertness, both are important for our hard-working men and women in production agriculture. For \$100, breakfast sponsors can provide coffee and a breakfast item to attendees of the Ag Mastermind programs and we will advertise you on all the email blast, newspaper articles, and flyers throughout town. Contact Kristie for more information.

Contact Me!

Got an idea, question, or comment?

Kristie Keys  
kristie.keys@ag.tamu.edu  
325-665-8790

TEXAS A&M  
AGRI LIFE  
EXTENSION



# Save the Date



July 8-10 - out for conference (available by phone)

July 12 - PCG (Lubbock)

July 16 - Ag Mastermind (Littlefield) \*\*see flyer above

July 26 - PCG (Lubbock)

July 29- August 3 - AgriLife State Conference (out but available by phone)

August 9 - PCG (Lubbock)

\*\*Stay tuned to social media and newsletters for more events\*\*



## Are you interested in Beekeeping?

Take this survey to help me plan a fun, hands-on program

Copy and paste into your web browser or scan QR code <https://forms.gle/dF5yPQJqU2CTauvq6>



<https://castro.agrilife.org/agronomy/>



<https://www.facebook.com/castrohalelambagronomy/>



<https://www.instagram.com/castrohalelambagronomy/>



<https://twitter.com/KeysToAgronomy>

Kristie Keys  
kristie.keys@ag.tamu.edu  
325-665-8790